

Breeding Practice Traineeship at « Elevage de Prana des Loups »

A kennel breeding Alaskan Malamutes and Eurasiers in the French Alps



Auriane Polge, 2nd year veterinary student at University of Life Sciences in Lublin



About the kennel

- Founded by a professional breeder passionate about Alaskan Malamutes and Eurasiers.
- Kennel is composed of around 20 Alaskan Malamutes and 60 Eurasiers, including the retired dogs
- Goals of the kennel:
 - To ensure a responsible and ethical breeding
 - To focus on health, temperament, beauty and well-being of all the dogs
 - To socialize the puppies in a family environment
- Health and care:
 - Genetic and health testing (DNA, hip and elbow dysplasia, degenerative polyneuropathy, dandy-walker syndrome, etc.)
 - Veterinary monitoring
 - Vaccination and preventive medicine
- Environment:
 - Spacious, clean and secure outdoor areas
 - Exercise and enrichment provided to all adult dogs and puppies
 - Dogs raised close to humans
 - Socialization with cats, chickens and the horse

Things to know about Alaskan Malamutes

- **Origin:** Alaska, bred by the Mahlemut Inuit for pulling heavy sleds
- **Temperament:** Strong, independent, affectionate, pack-oriented
- **Use:** Working dog (sled pulling, endurance, strength)
- **Characteristics:** Large, powerful, thick coat, high stamina



Things to know about Eurasiers

- **Origin:** Germany (1960s, cross between Chow-Chow, Wolfspitz, Samoyed)
- **Temperament:** Calm, gentle, loyal, reserved with strangers but devoted to family
- **Use:** Companion dog (not a working breed)
- **Characteristics:** Medium size, fluffy double coat, balanced and adaptable



My daily responsibilities as an intern



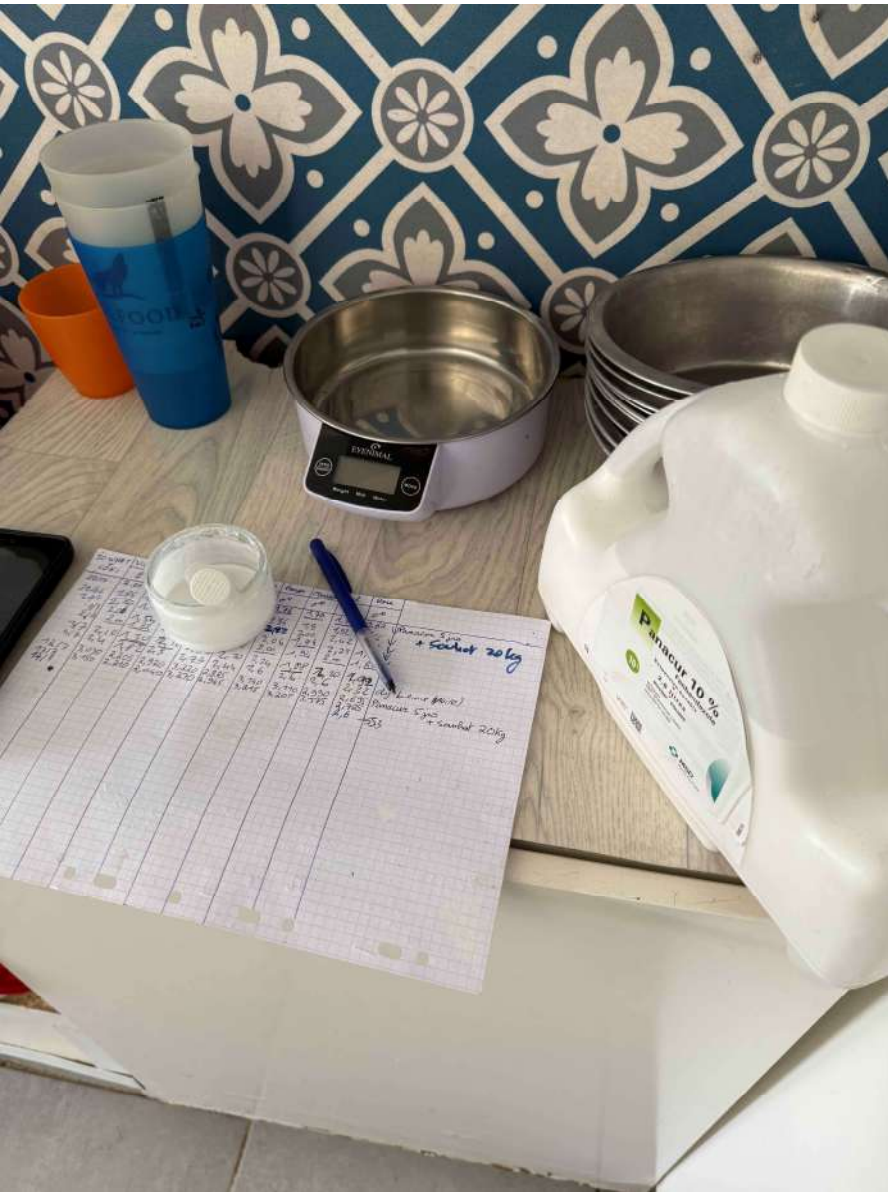
- Feeding, watering, cleaning kennels
- Assisting with health monitoring (vaccination, deworming, basic checks)
- Supporting reproduction management (heat cycle observation, pregnancy follow-up)
- Helping during whelping and caring for newborns
- Weighing puppies daily and performing quick clinical checks
- Grooming and preparing puppies for adoption (bathing, brushing, microchip check)
- Preparing puppy kits and assisting with administrative tasks
- Socializing puppies and handling adult dogs



At the kennel, puppies are fed three times a day. Food quantities are calculated based on the average weight of each litter, and littermates are fed together.

EURASIERS			
OKAMI 1P213B	4: 1 2/3 Sensitive	1: 1 Senior	
WOK 1SB	ISAAC SLOAN COOPER NORWAY JASPER		
NUNA 1B			
WANDA 1SB	3: 1/5 Sensitive	2: 618 B	1: 213 L
TINDER 1SB	RACCOON OCTAVIA KEPNER LOGAN	1: 518 B	REBEL
JEDA 213 Senior	TTIME	VIC	
JEDA 213 Senior	11: 213 B	6: petit 1B	
JEDA 213 Senior	TekPaf t.A.T.U RAKI	TOGO	GIN
JEDA 213 Senior	SHEWIE PYROLI R2D2	TIPUNCH	ROUANITA
JEDA 213 Senior	SKODA PINK OURAL	NIOKI	
JEDA 213 Senior	OUPS ROBBINS	OBIWAN	
JEDA 213 Senior	8: 1,5 B	SUSHI	
JEDA 213 Senior	PADAWAN	RAVEN	
JEDA 213 Senior	SPRITZ	KROKMOU	
JEDA 213 Senior	ROUDODOU	SIKU	
JEDA 213 Senior	SOWHAT		
JEDA 213 Senior	16: 1B	UUHISKY	
JEDA 213 Senior	KWAK WARREN	NANUUQ	UPSI
JEDA 213 Senior	SKOLL	MOGWAI	TCHOUTCHOU
JEDA 213 Senior	MAYA TORRES	NUMIAK	DELUCA
JEDA 213 Senior	CLARKE UMESHU	MUSHU	UTAPAU

Feeding the entire pack requires strict organization. Each adult dog eats twice a day, with food type and quantity adapted to individual needs (e.g. digestion issues, age, activity level). Some dogs also require supplements or medications, making it essential to follow a precise feeding protocol to ensure their health and well-being.



Puppies are weighed frequently to check their growth and well-being, but also to give them their deworming. The dose is carefully computed based on individual's weight.



Newborns are weighed daily to monitor milk intake and growth, which also provides an opportunity for a quick clinical check.





Maintaining a strict hygiene protocol in the maternity ward is essential for the health and well-being of both mothers and their newborns. Each box is thoroughly cleaned and disinfected daily, with fresh bedding provided to ensure a safe, comfortable, and sanitary environment.





Vet visits are regularly planned to microchip the puppies, vaccinate them, issue their passports (for those leaving France), check their health, etc. They leave the kennel in good health and with complete papers.

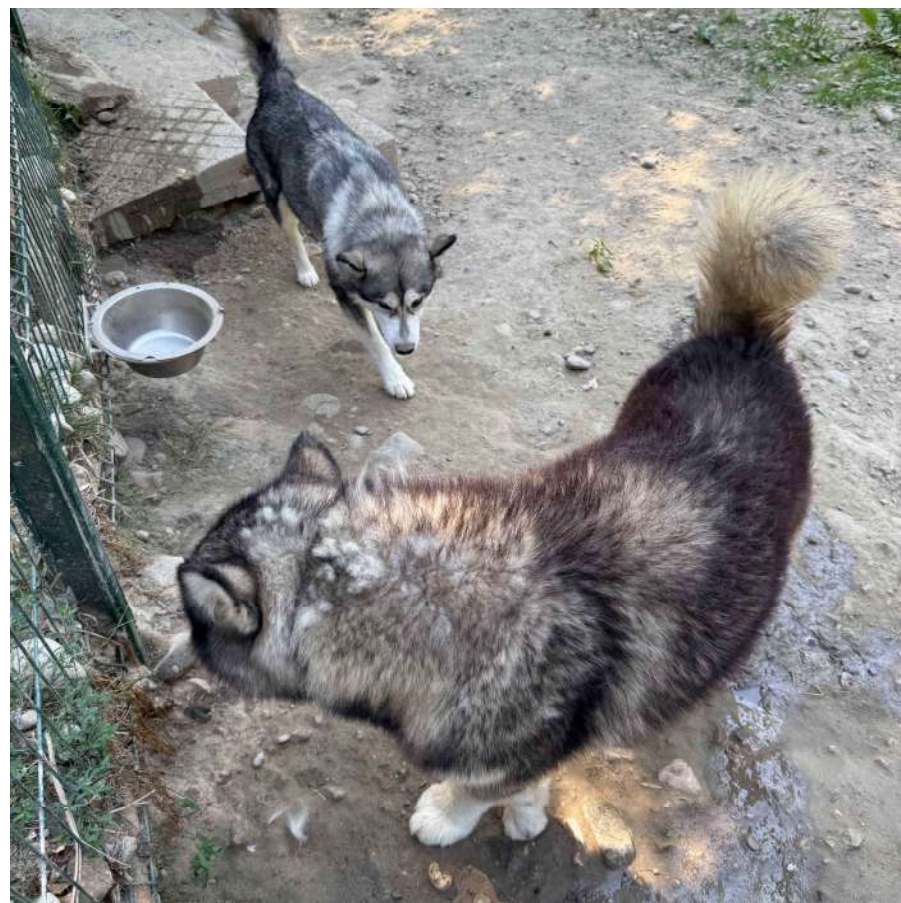


Daily socialization is a key part of raising well-balanced puppies. They grow up within the pack and interact regularly with humans, which helps them develop confidence, playfulness, and strong social skills.





Grooming is an important part of the daily routine. The dogs are regularly brushed and cared for, especially during the summer when they are shedding their coats heavily.



Puppies are bathed and groomed on their adoption day to ensure they are clean, comfortable, and well-presented for their new families. The microchip is checked to confirm their identification.





Each family receives a puppy kit including:

- Food bowl and measuring cup
- Brush
- Chew treat and toy
- Health booklet, microchip info and documents
- Magazine and breed information
- Branded bag from the kennel
- Notice with care instructions (feeding, vaccination schedule, deworming, spaying recommendations, etc.)



During my traineeship, I also took care of:

- The horse (feeding, daily care)
- The cats
- The chickens and ducks





Safe, clean,
and
enriching
setting for
puppies and
the pack

